

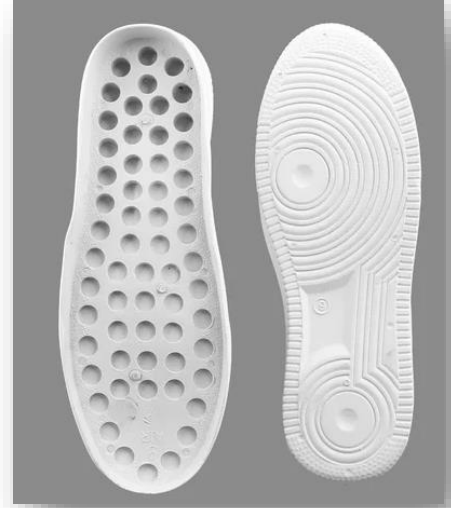
**KPS 6806 (108CBLF)**

**Description:** This compound is designed based on effective foaming agent which leads to light density (desired density based on customer's need is available). This formulation is based on special stabilizer and plasticizer that provides required condition for injection process.

**Packaging:** 25 kg laminated polypropylene bags

**Storage:** dry place, away from the sun, temperature below 30°C

**Color:** Grey, White



Properties	Unit	Amount	Standard
Density	$gr/cm^3$	$0.6 \pm 0.01$	ASTM D 792
Hardness at 15 second	Shore "A"	$68 \pm 2$	ASTM D 2240
Thermal stability at 200°C	Minute	Min 50	VDE 0472
Mechanical properties Tensile Elongation	MPa %	$7 \pm 1$ Min 220	ASTM D 638

Temperature profile:

The recommended temperature settings for the extruder with L/D around 22-24 are as follows :

	Zone 1	Zone 2	Zone 3	Zone 4	Head	Die
Temp (°C)	$140 \pm 5$	$145 \pm 5$	$150 \pm 5$	$155 \pm 5$	$150 \pm 5$	$160 \pm 5$

**Head Office:** 5<sup>th</sup> floor, Number 51, 6<sup>th</sup> Golestan street, Pasdaran Avenue, Tehran, Iran. Tel :

(+98 21)79453000, Fax: (+98 21)88762819

[info@khorramco.com](mailto:info@khorramco.com) website: [www.khorramco.com](http://www.khorramco.com)

Approved by: QC & Laboratory Manager